

Division of Global Health Protection
Center for Global Health



Prepared for Pandemic Response: Field Epidemiology Training Programs Support National Responses to COVID-19 Globally

Audrey Hu

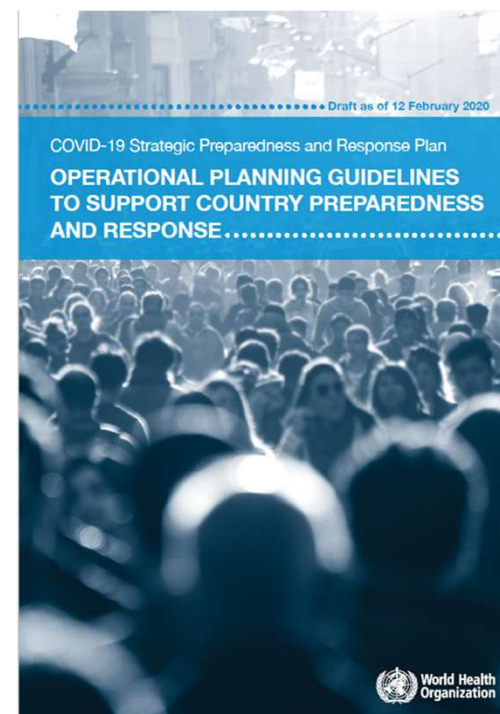
CDC/PHI Monitoring & Evaluation Fellow

GHSA Workforce Development

November 3, 2020

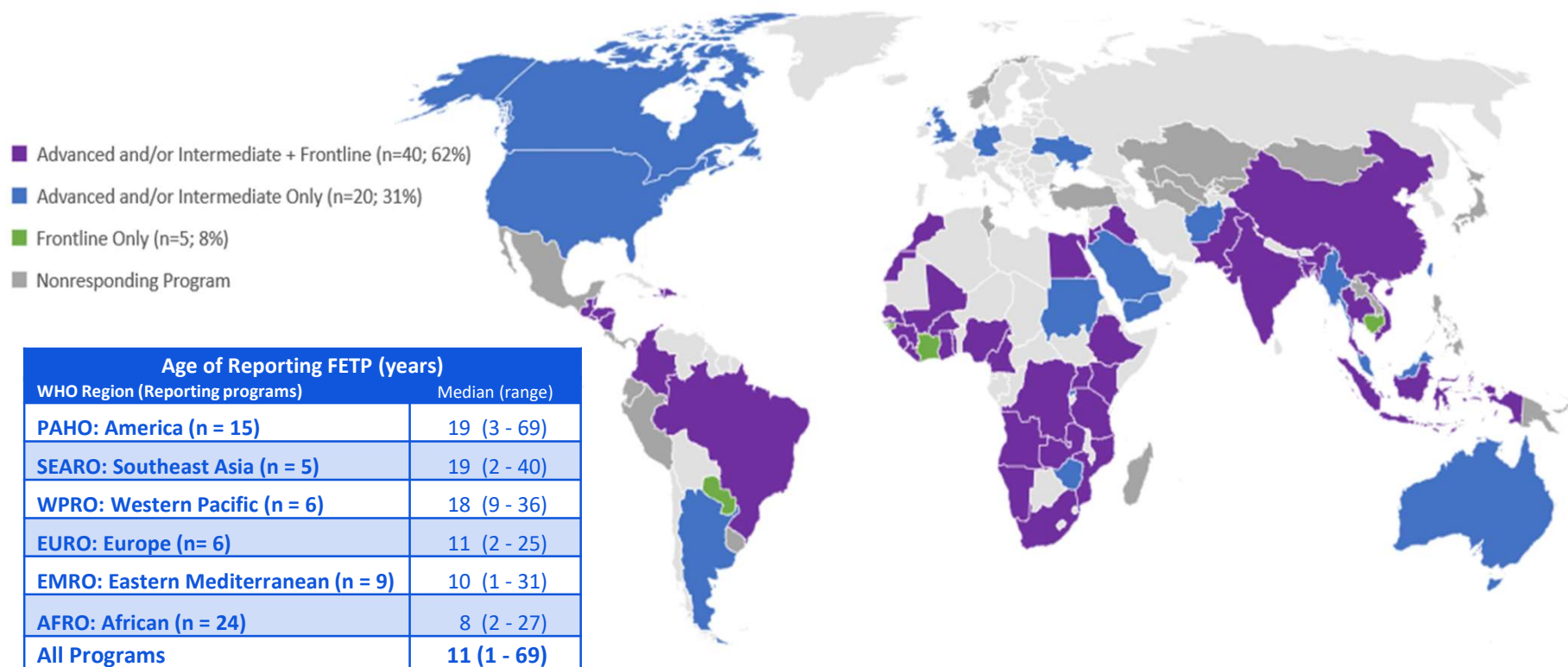
Background

- COVID-19 has shown the need for a well-trained public health workforce
- Aim: to document FETP contributions to COVID-19 response
- Online survey structured on WHO Pillars of Public Health Preparedness and Response planning guidelines
 - P1. Country-level coordination, planning, and monitoring
 - P2. Risk communication and community engagement
 - P3. Surveillance, rapid-response teams, and case investigation
 - P4. Points of entry
 - P5. National laboratories
 - P6. Infection prevention and control
 - P7. Case management
 - P8. Operations support and logistics



Survey Respondents: Worldwide FETP Engagement

N = 65



Quantitative Analysis: FETP Engagement by Activity Pillar

Activity Pillar	FETP	
	Residents	Graduates
P1: Coordination	39 (60%)	63 (97%)
P2: Risk Communication	37 (57%)	47 (72%)
P3: Surveillance	55 (85%)	61 (94%)
P4: Points of entry	37 (57%)	55 (85%)
P5: Laboratories	21 (32%)	44 (68%)
P6: IPC	31 (48%)	48 (74%)
P7: Case management	20 (31%)	38 (58%)
P8: Logistics	16 (25%)	35 (54%)
Any Response Activities	56 (85%)	64 (98%)
N=65 (number and proportion of program reporting activities)		

- Overall, programs reported high engagement in any COVID response activities
- Graduates more frequently engaged than residents
- For both, surveillance key engagement area
- Graduates most engaged in response coordination; points of entry
- Least engaged for both: operational support and logistics

Qualitative Analysis: Themes

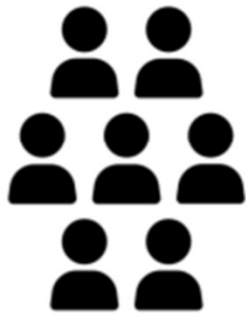
- Conducting Epidemiological Activities
- Managing Logistics and Coordination
- Leading Risk Communication Efforts
- Providing Guidance
- Supporting Surveillance Activities
- Training and Developing the Workforce
- Holding Leadership Positions



Thai epidemiologists from the Thailand FETP conducting active case investigations for COVID during Ramadan. (Photo by Thailand Ministry of Public Health)

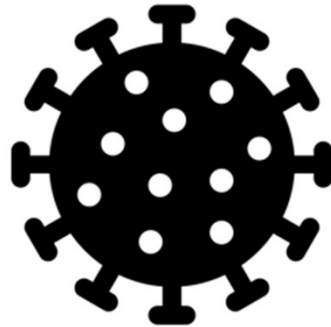
Conducting Epidemiologic Activities

Contact Tracing



Created by Adrien Coquet
from Noun Project

Sample Collection



Created by Andrejs Kirma
from Noun Project

Situation Reports



Created by Arafat Uddin
from Noun Project

Case Investigations



Created by visual language
from Noun Project



Conducting Epidemiologic Activities



Sample collection conducted by members of the Malaysia Epidemic Intelligence Program. (Photo from TEPHINET)

*“We have alumni and current students in the **National Incidence room** where they are involved in **analyzing data**, developing the **situation reports**, conducting **literature reviews**, writing **guidelines**. [They] are also actively engaged in state health departments conducting **cluster investigations**. “*
(Australia)

*“Graduates who work as local epidemiologists at **points of entry** have conducted **case detection**, **sample collection**, **coordination of patient transport**, and **case investigations** to make the decision of whether and where to isolate. “*
(Dominican Republic)

Leading Risk Communication Efforts

Communication
Materials



Created by Pause08
from Noun Project

Combat
Misinformation



Created by Oksana Latysheva
from Noun Project

Public Awareness
Campaigns



Created by priyanka
from Noun Project

Call Centers



Created by Eucalyp
from Noun Project



Leading Risk Communication Efforts



China FETP Trainees deployed to COVID-19 response. (Photo from TEPHINET)

*“Most of our [FETP] fellows are **in the frontline**, introducing the public to the national epidemic, the risk assessment results, **the update on outbreak investigations**, and effective preventive measures...82 graduates were interviewed by national, provincial, prefecture social media, TV, newspaper”*
(China)

*“FELTPs advocated for the establishment of the **toll-free hotline** for COVID-19 response. FELTPs took charge of manning the **call centre**, operating 24 hours, for three weeks, before they were joined by other cadres.”*
(Namibia)

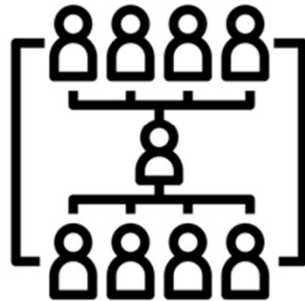
Holding Leadership Positions

National
Laboratories



Created by Jacopo Bonacci
from Noun Project

Emergency
Operations Centers



Created by Manthana Chaiwong
from Noun Project

Subject Matter
Experts



Created by Wilson Joseph
from Noun Project

Providing
Guidance



Created by Gregor Cresnar
from Noun Project



Holding Leadership Positions



Graduate of the South Caucasus FELTP conducting a COVID-19 survey at a marketplace. (Photo from CDC)

*“FETP graduates are responsible for **incident command (IC)**, Deputy IC, Head of Operation Team (COVID-19 Joint Investigation Team), Head of **Situation Awareness Team (SAT)**, Head of Strategic Team that **includes developing the guidelines** for persons under investigation and outbreak investigations.”*

(Thailand)

*“FETP-Advanced is engaged in **the planning and coordinating actions** from the first moment of the pandemic; providing **direct support** to the Director of Epidemiology in many of the response activities at the **central and regional levels.**”*

(Paraguay)

Conclusions

- FETP residents and graduates have substantially contributed to COVID-19 response efforts globally
- FETPs trains in competencies critical to the response
 - Epidemiologic Methods, including contact tracing, outbreak investigation, disease surveillance, data analysis
 - Risk Communication
- Survey informs future FETP training
 - Strengthen management and leadership competencies
- FETPs build valuable workforce capacity critical to public health emergencies



Temperature checks conducted by members of the Afghanistan FETP .
(Photo from TEPHINET)

Acknowledgements

- All Field Epidemiology Training Programs, program directors, residents, and graduates that provided information for our survey
 - *Afghanistan FETP; Angola FETP; Argentina FETP; Australia Masters of Philosophy in Applied Epidemiology; Bangladesh FETP; Belize FETP; Brazil Training Program in Epidemiology Applied to Services of the Single Health System (EpiSUS); Burkina Faso FETP; Cambodia FETP; Cameroon FETP; Canada Field Epidemiology Program; Caribbean FETP; Central America FETP; China FETP; Colombia FETP; Cote d'Ivoire FETP; Dominican Republic FETP; Democratic Republic of the Congo Field Epidemiology and Laboratory Program (FELTP); Egypt FETP; El Salvador FETP; Ethiopia FETP, European Programme for Intervention Epidemiology Training (EPIET) and the European Programme for Public Health Microbiology Training (EUPHEM); Germany FETP (Postgraduate Training in Applied Epidemiology); Ghana FELTP; Guatemala FETP; Guinea FETP; Guinea-Bissau FETP; Haiti FETP; Honduras FETP; India Epidemic Intelligence Service (EIS); Indonesia FETP; Iraq FETP; Jordan FETP; Kenya FELTP; Liberia FETP; Malaysia Epidemic Intelligence Program; Mali FETP; Mediterranean and Black Sea Programme for Intervention Epidemiology Training (MediPIET) including Albania, Armenia, Georgia, Kosovo, Lebanon, Moldova, Montenegro, North Macedonia, Palestine, Serbia, Tunisia, Ukraine; Morocco FETP; Mozambique FELTP; Myanmar FETP; Namibia FELTP; Nicaragua FETP; Nigeria FELTP; Pakistan FELTP; Paraguay FETP; Rwanda FETP; Saudi Arabia FETP; Senegal FETP; Sierra Leone FETP; South Africa FETP; South Caucasus FELTP including Armenia, Azerbaijan, Georgia; Sudan FETP; Taiwan FETP; Tanzania FELTP; Thailand FETP; Togo FETP; Uganda FETP (Master of Public Health); Ukraine FETP; United Kingdom FETP; United States EIS; Vietnam FETP; Yemen FETP; Zambia FETP; Zimbabwe FETP*
- TEPHINET
- CDC



Contact:

- Audrey Hu: ahu@kingcounty.gov
- Henry Baggett (CDC): hfb8@cdc.gov
- Carl Reddy (TEPHINET): creddy@tephinet.org

For more information, contact CDC
1-800-CDC-INFO (232-4636)
TTY: 1-888-232-6348 www.cdc.gov

The findings and conclusions in this report are those of the authors and do not necessarily represent the official position of the Centers for Disease Control and Prevention.

